

~~TOP SECRET~~ HANDLE VIA ██████████ CONTROL SYSTEM

SWITCH CLUSTER FOR INTERNAL INSTRUMENT CONTROL

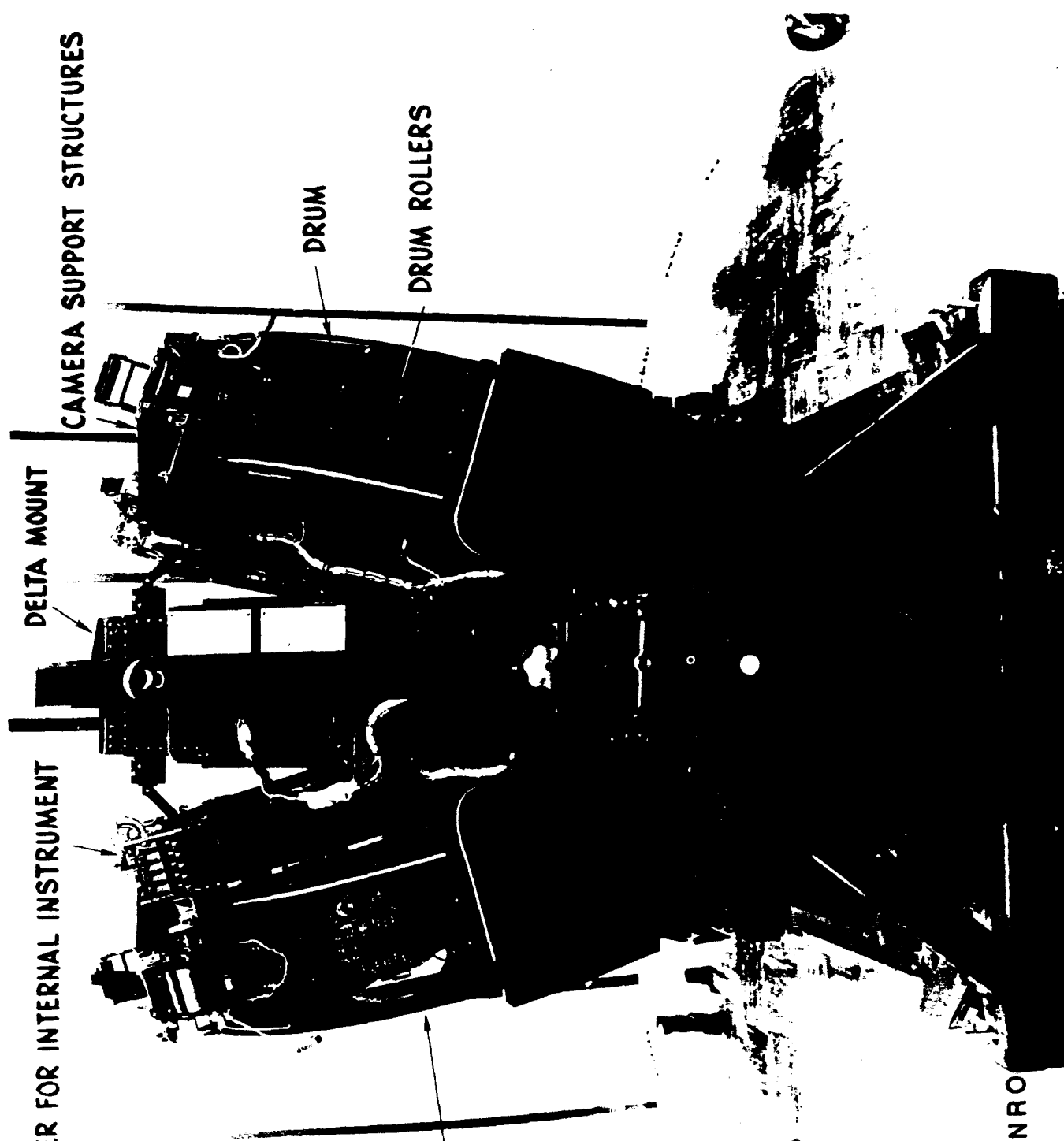
DELTA MOUNT

CAMERA SUPPORT STRUCTURES

DRUM

DRUM ROLLERS

DRUM



Declassified and Released by the NRO

In Accordance with E.O. 12958

NOV 26 1997

on

Profile view of panoramic camera pair for J-3 System

~~TOP SECRET~~ HANDLE VIA ██████████ CONTROL SYSTEM

~~TOP SECRET~~ HANDLE VIA CONTROL SYSTEM



PYROTECHNIC DOOR EJECTION DEVICE

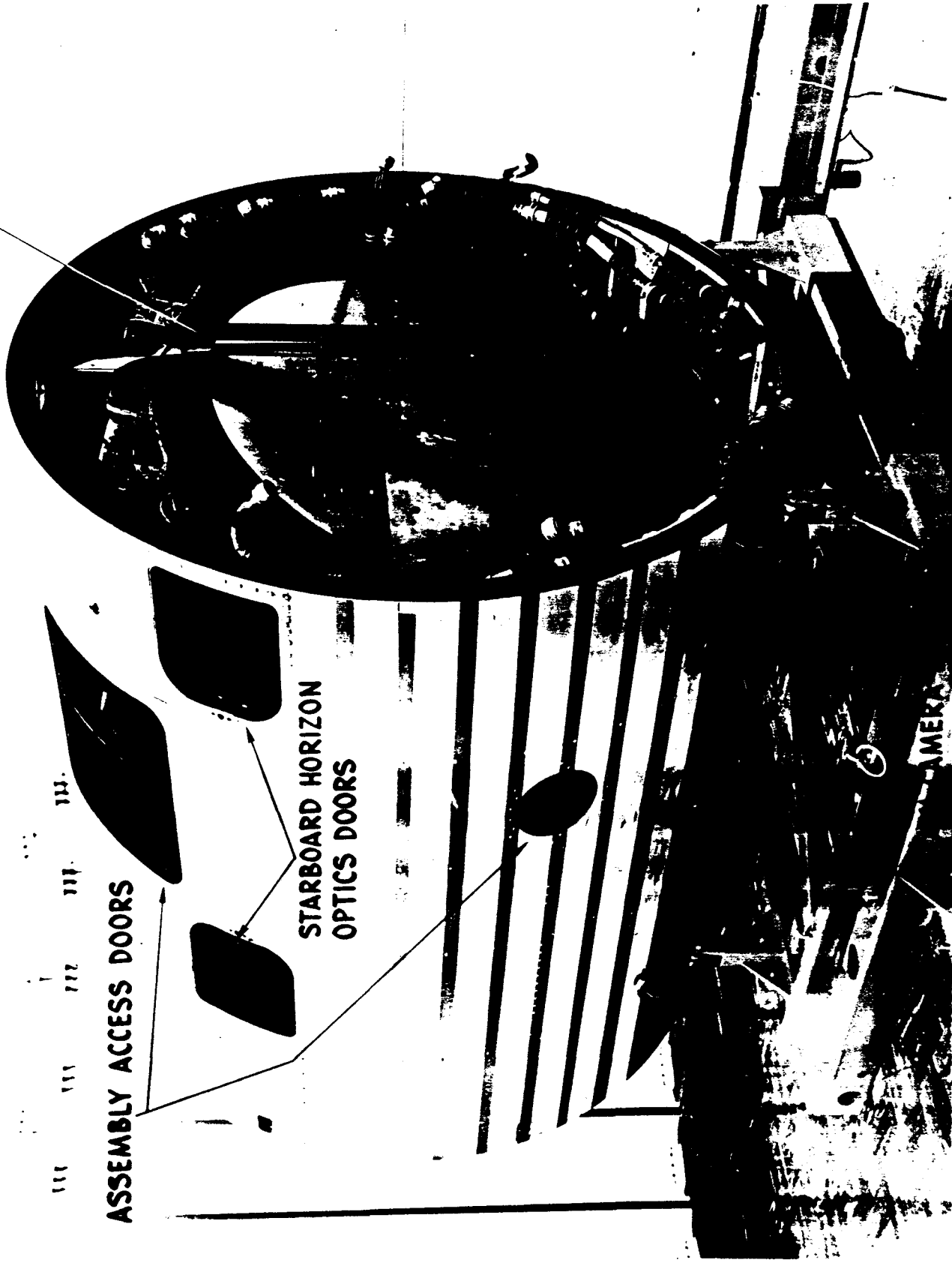
HORIZON OPTICS BOOTS

ELECTRONICS PACKAGES SERVING COMMAND AND TELEMETRY FUNCTIONS

J-3 System main instrument barrel on system dolly

**TOP SECRET** HANDLE VIA ██████████ CONTROL SYSTEM

70mm FILM LEADER FOR TAKEUP CASSETTES



ASSEMBLY ACCESS DOORS

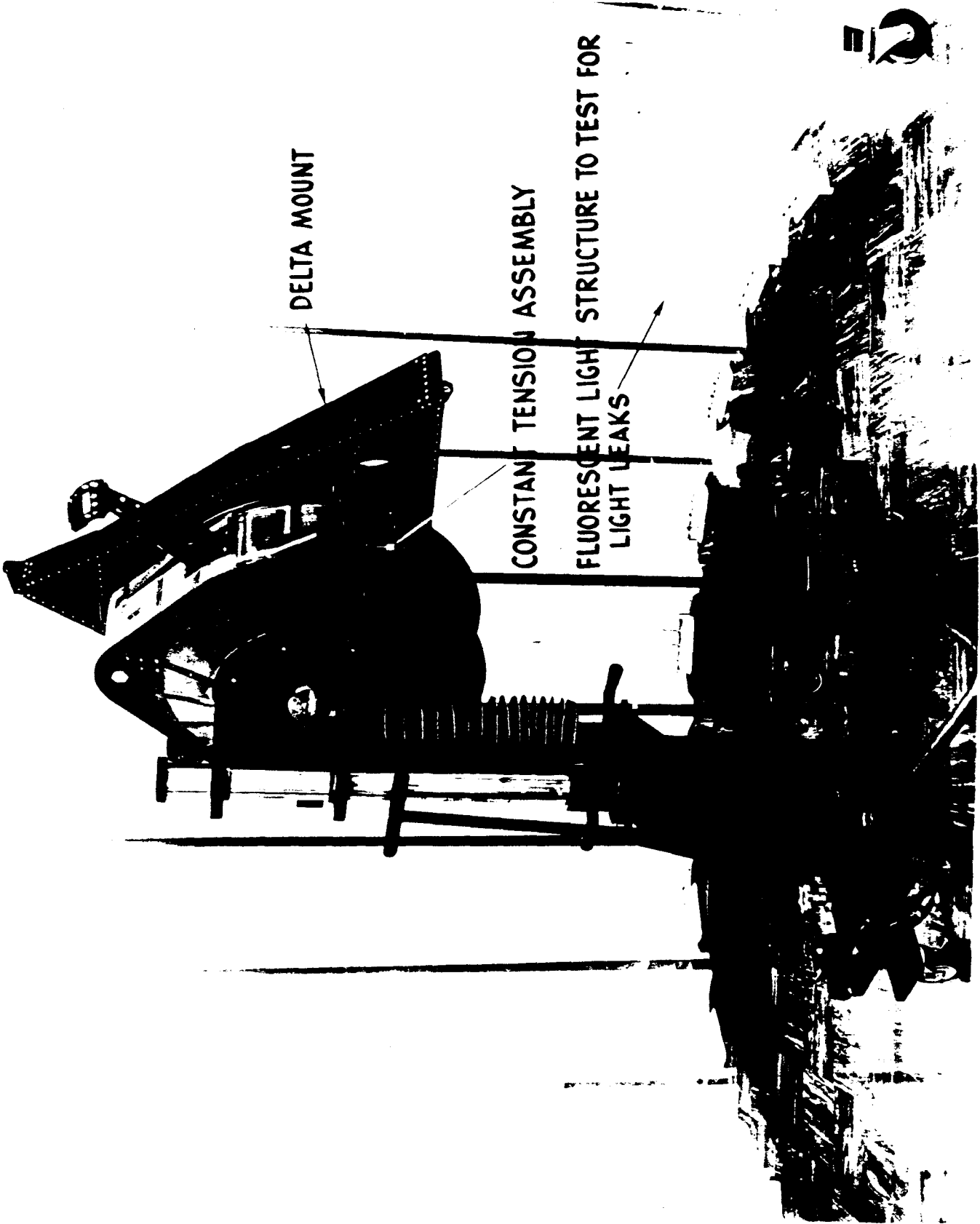
STARBOARD HORIZON OPTICS DOORS

CAMERA

Forward view of J-3 System instrument barrel with cameras installed

**TOP SECRET** HANDLE VIA ██████████ CONTROL SYSTEM

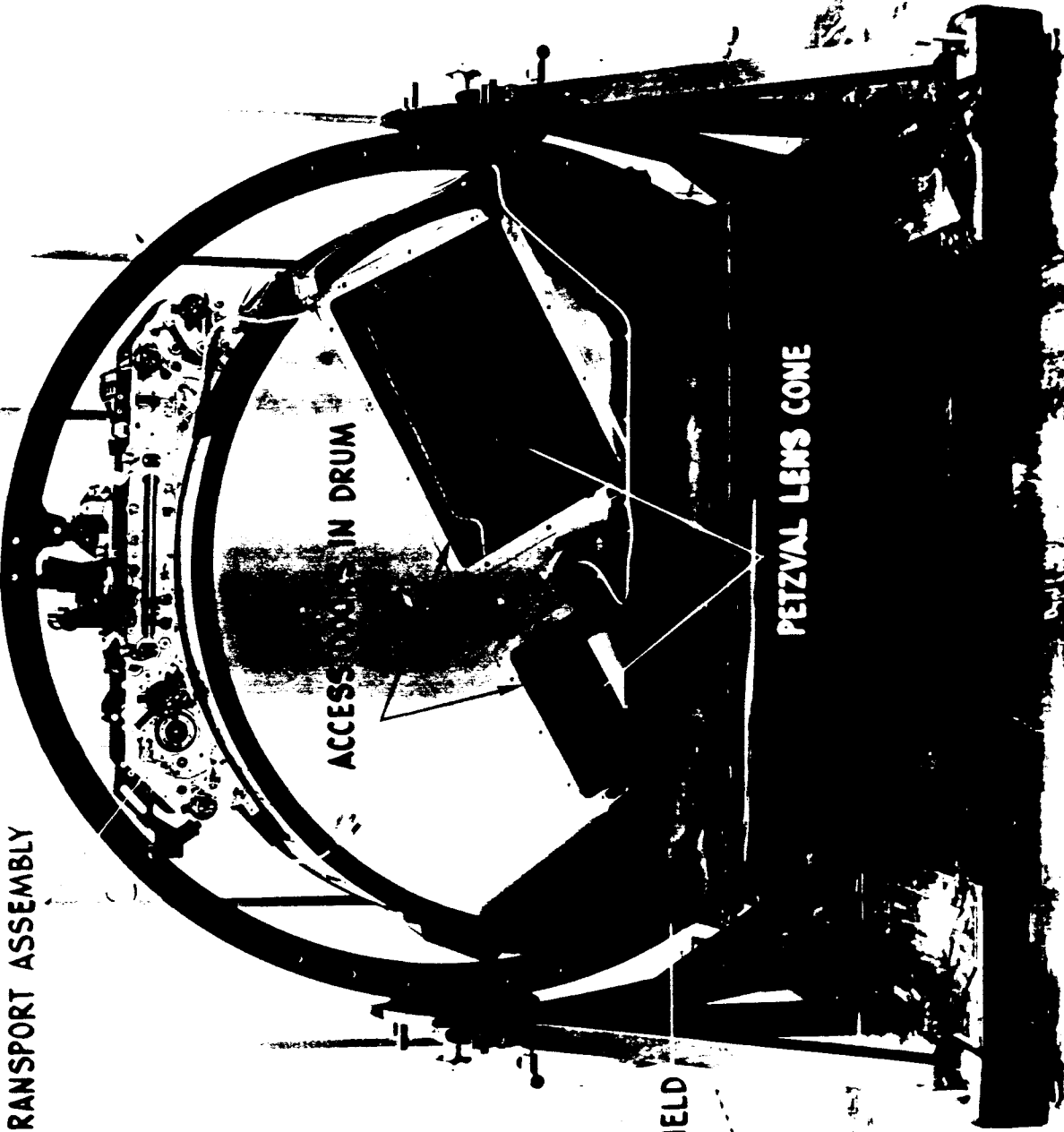
~~TOP SECRET~~ HANDLE VIA CONTROL SYSTEM



Film supply cassette on dolly ready for loading into instrument barrel

~~TOP SECRET~~ HANDLE VIA ~~CONTROL SYSTEM~~

FILM TRANSPORT ASSEMBLY



Head-on view of panoramic camera pair for J-3 System

~~TOP SECRET~~

~~TOP SECRET~~ HANDLE VIA ██████████ CONTROL SYSTEM

FRAME METERING ROLLER

SCAN HEAD ASSEMBLY

TEST-FRAME MOUNT

Low oblique view of panoramic camera pair for J-3 System

~~TOP SECRET~~ HANDLE VIA ██████████ CONTROL SYSTEM

~~TOP SECRET~~ HANDLE VIA ██████████ CONTROL SYSTEM

# J-3 SYSTEM 1967

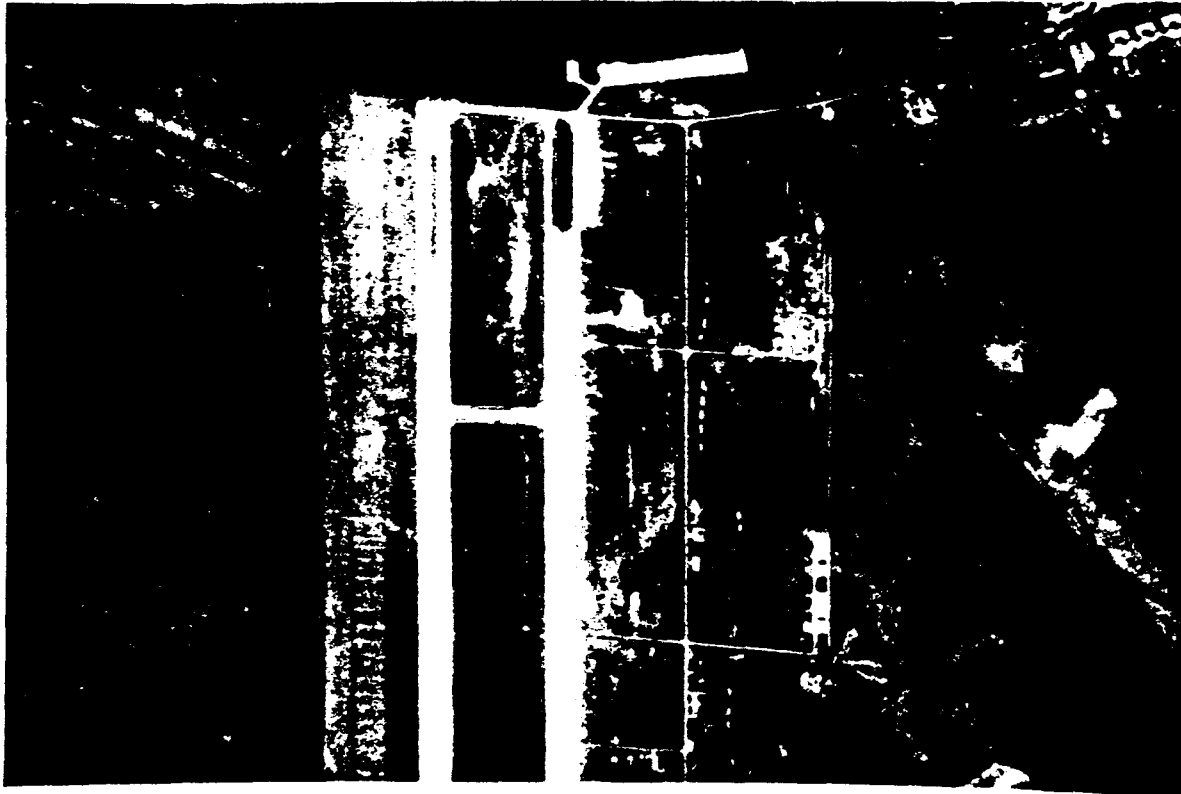
MISSION 1104



~~TOP SECRET~~ HANDLE VIA ██████████ CONTROL SYSTEM

~~TOP SECRET~~ HANDLE VIA [REDACTED] CONTROL SYSTEM

MISSION 9017 6/61 MISSION 1104 8/68



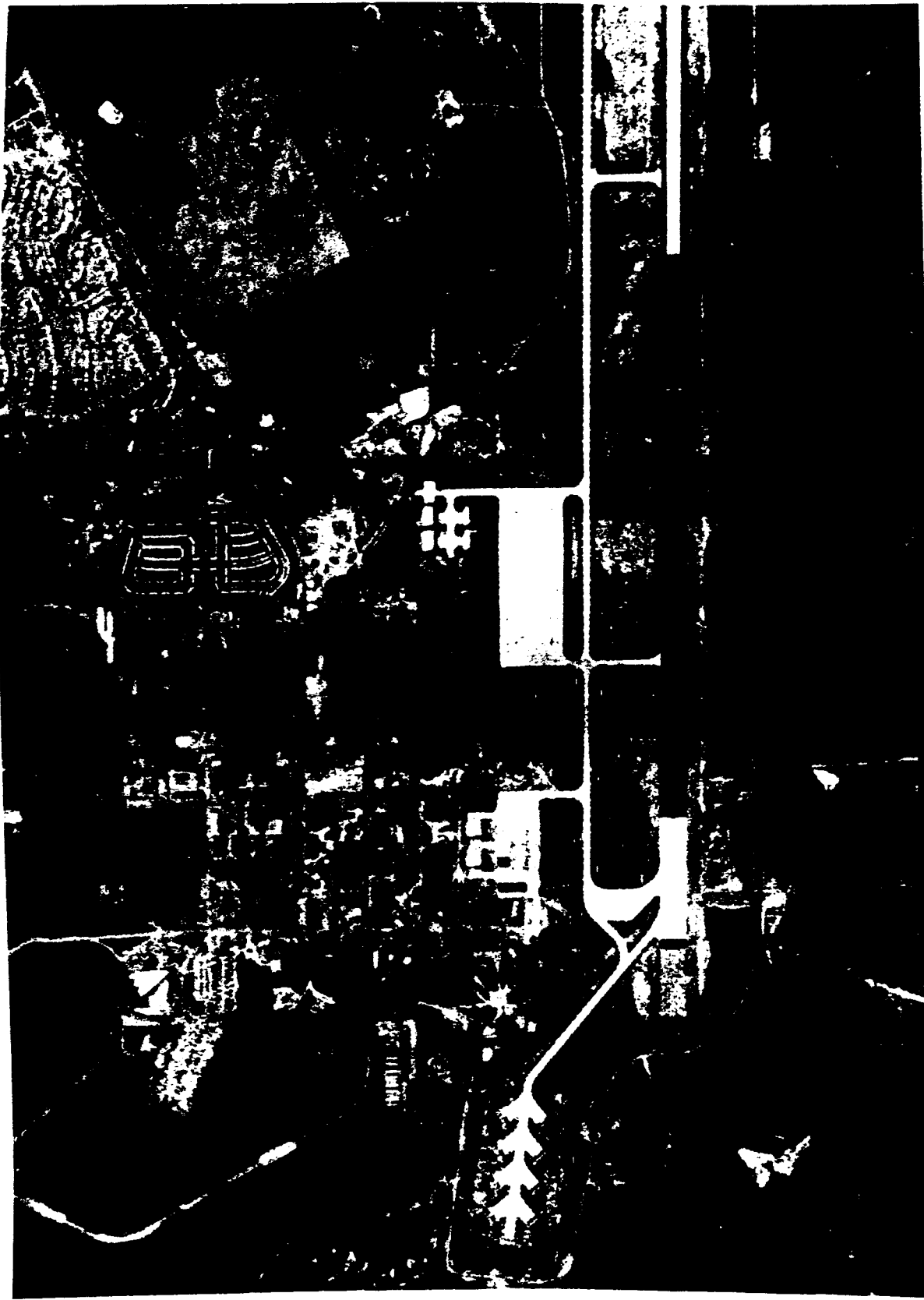
~~TOP SECRET~~ HANDLE VIA [REDACTED] CONTROL SYSTEM



~~TOP SECRET~~ HANDLE VIA ██████████ CONTROL SYSTEM

# C- SYSTEM 1960-1961

MISSION 9017



~~TOP SECRET~~ HANDLE VIA ██████████ CONTROL SYSTEM

~~TOP SECRET~~ HANDLE VIA ~~██████████~~ CONTROL SYSTEM

# C" SYSTEM 1961-1962

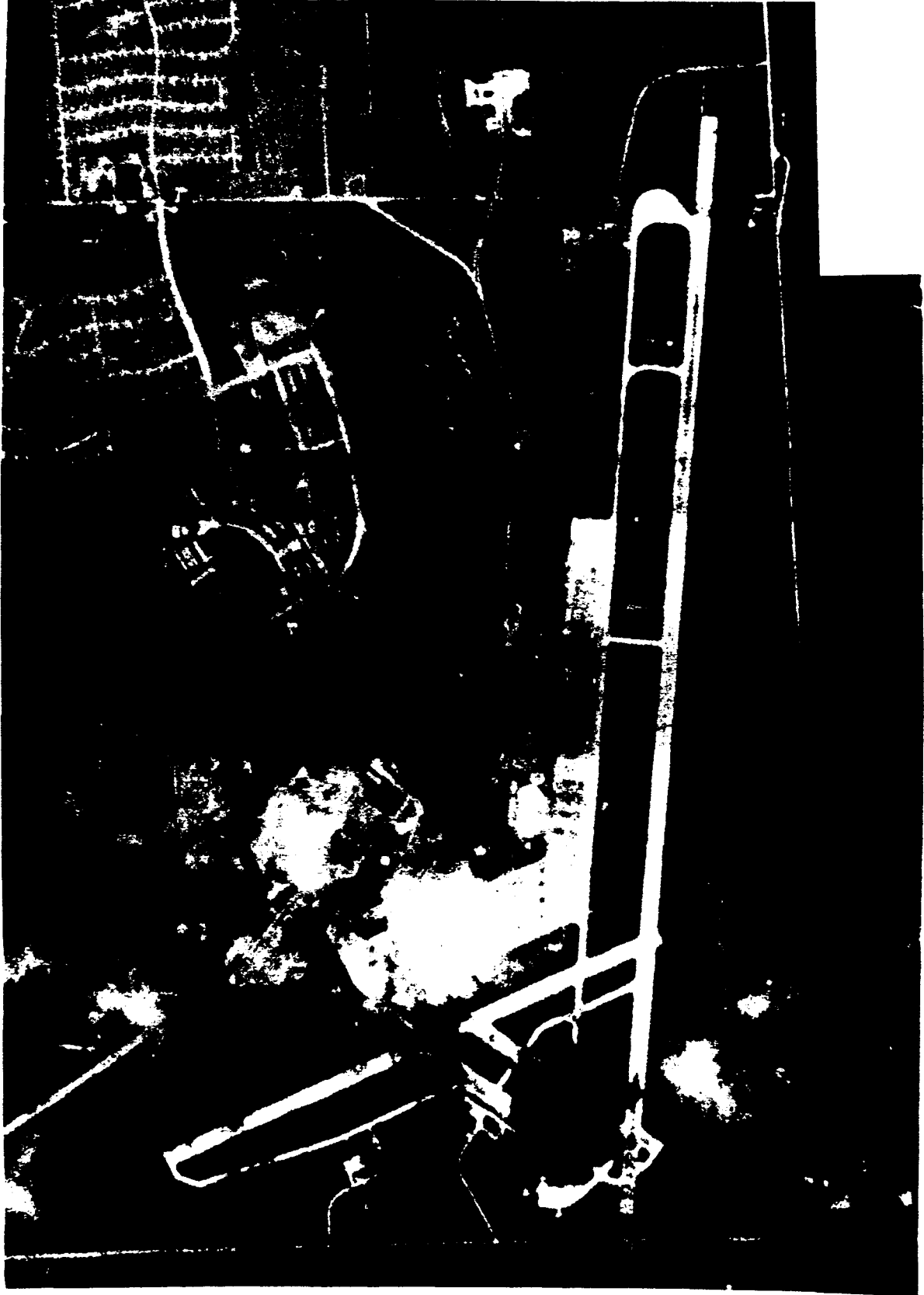
MISSION 9022



~~TOP SECRET~~ HANDLE VIA ~~CONTROL SYSTEM~~

# C-SYSTEM 1959-1960

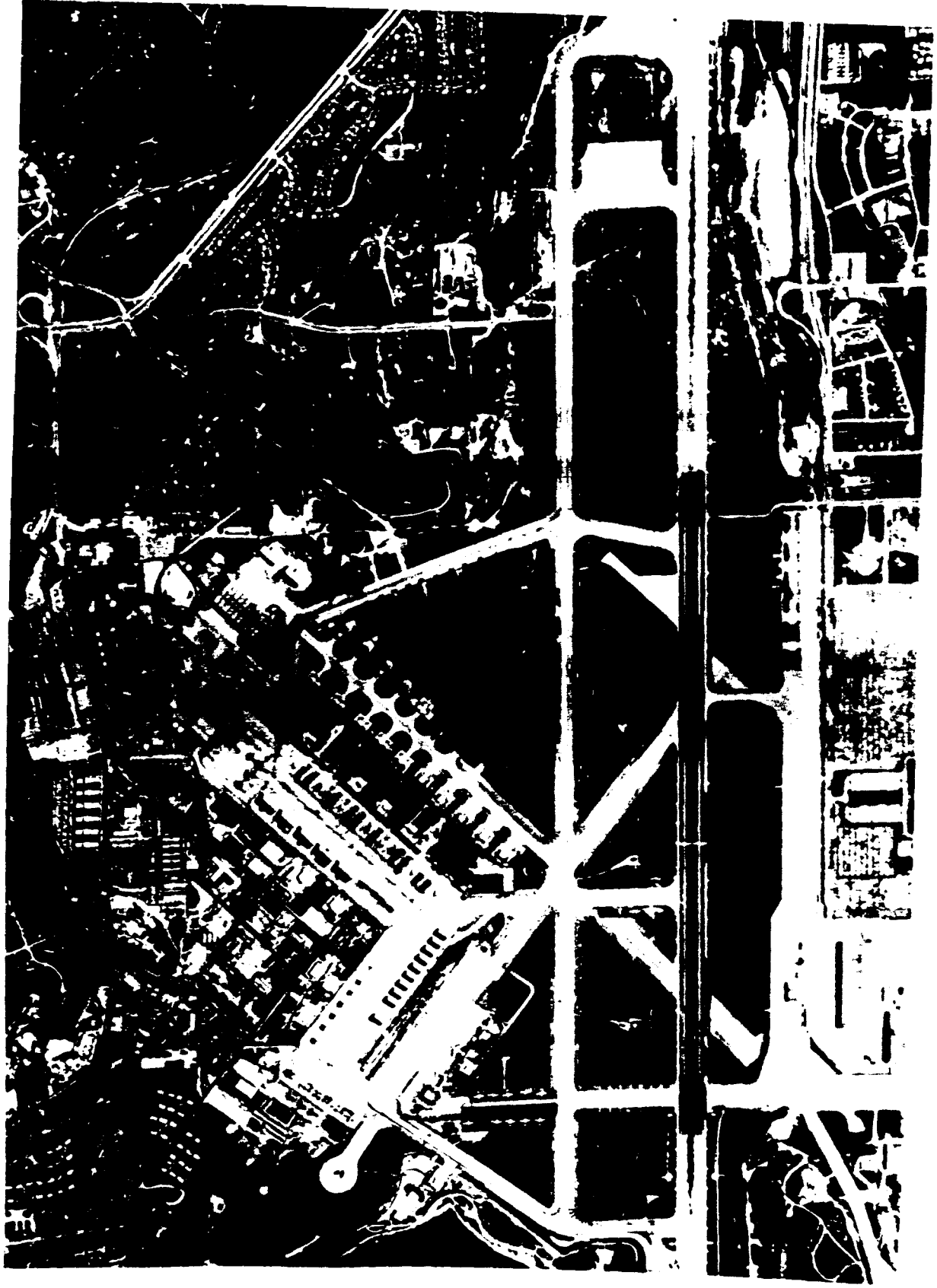
MISSION 9009



~~TOP SECRET~~ HANDLE VIA ██████████ CONTROL SYSTEM

# J-1 SYSTEM 1963-1969

MISSION 1006

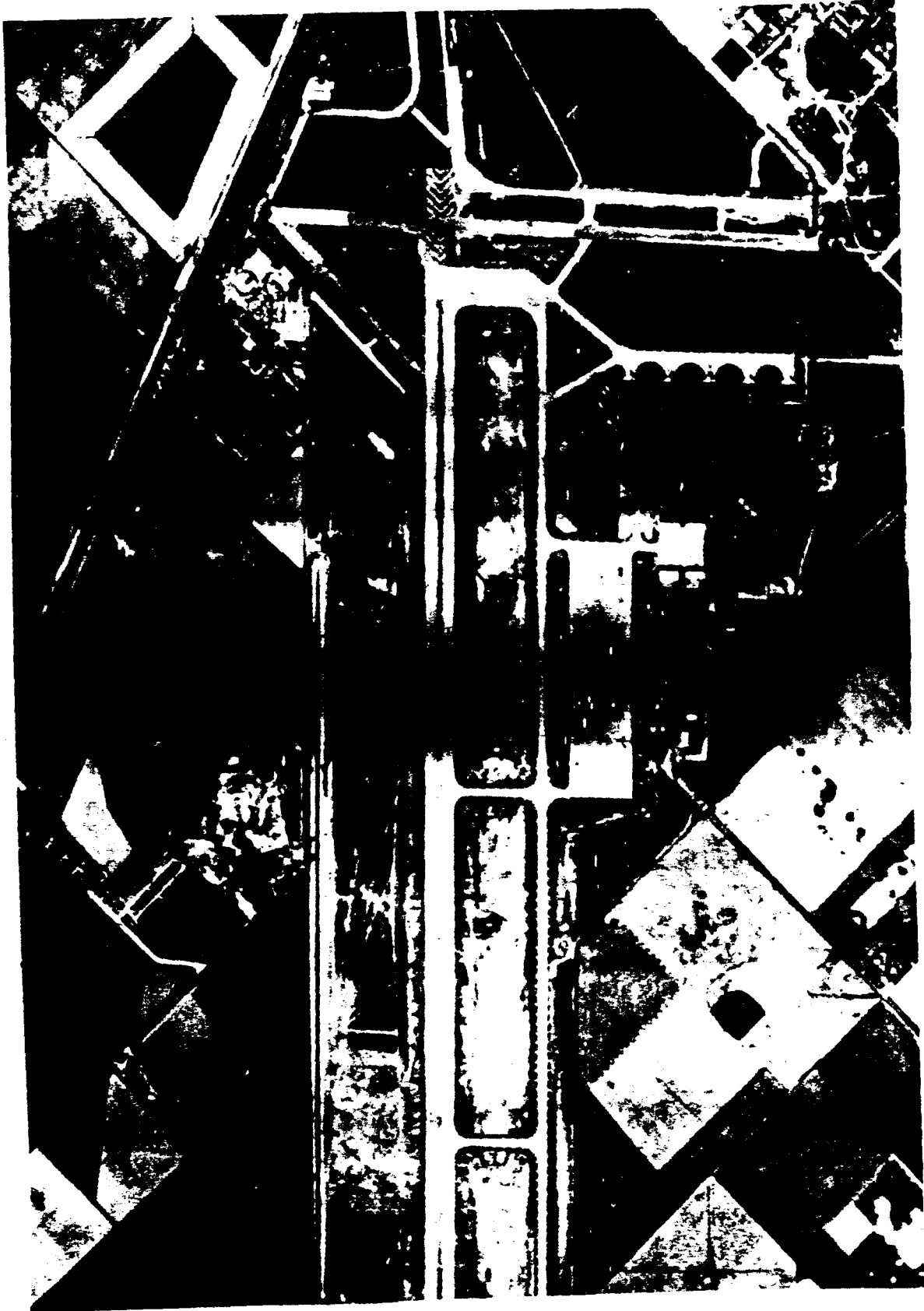


~~TOP SECRET~~ HANDLE VIA ██████████ CONTROL SYSTEM

~~TOP SECRET~~ HANDLE VIA [REDACTED] CONTROL SYSTEM

# M SYSTEM 1962-1963

MISSION 9037



~~TOP SECRET~~ HANDLE VIA [REDACTED] CONTROL SYSTEM